

ARTS VENUES MK

ARTS GUIDE

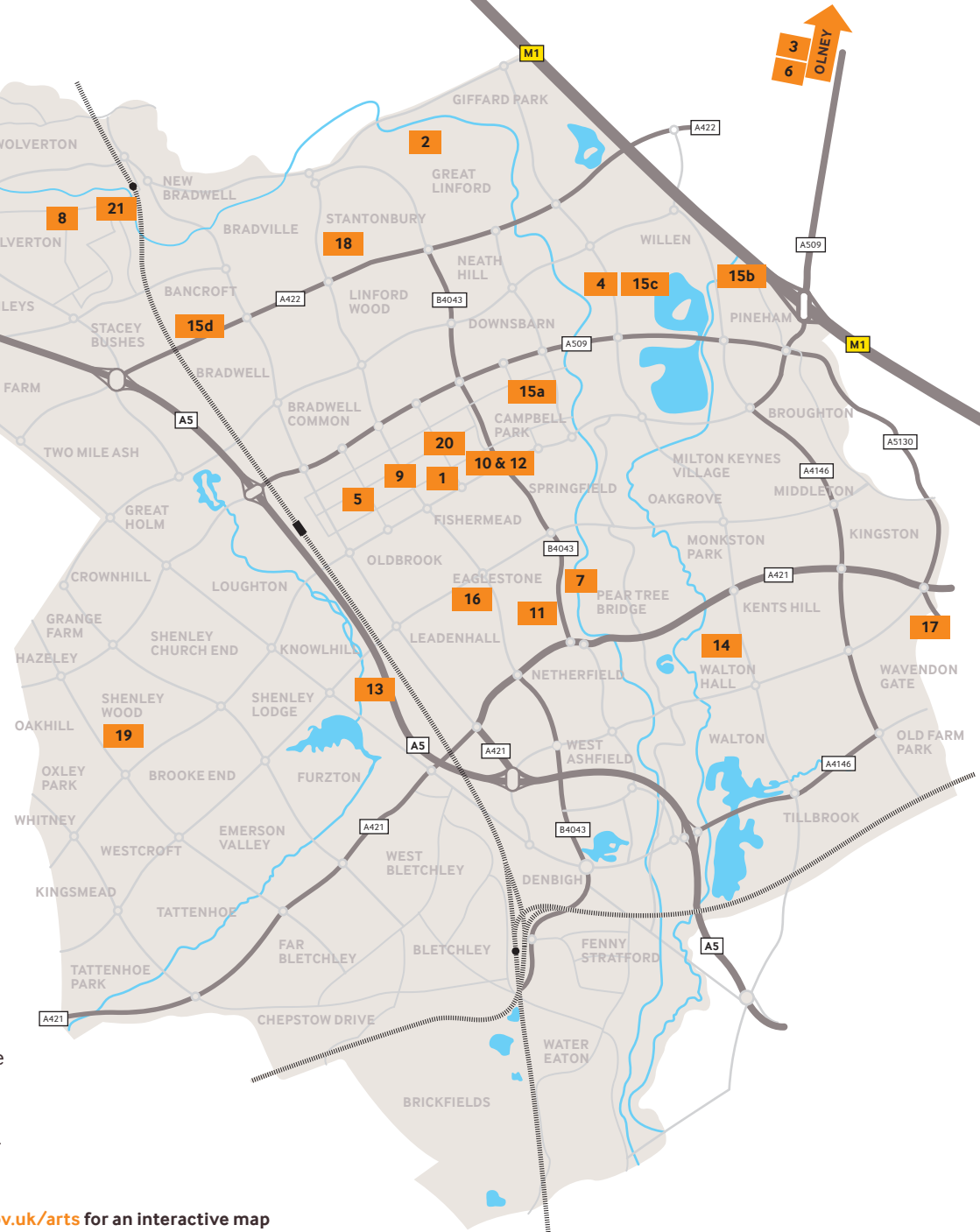
Including a walking tour
of art in Milton Keynes

www.milton-keynes.gov.uk/arts



VENUES

- 1 AIM Gallery
- 2 Artworks-MK
- 3 Cowper & Newton Museum
- 4 The Chrysalis Theatre
- 5 FringeMK
- 6 ICETWICE Gallery and Bookstore
- 7 Inter-Action MK
- 8 Madcap Performing Arts
- 9 Milton Keynes City Church
- 10 Milton Keynes Gallery
- 11 MK Arts for Health
- 12 Milton Keynes Theatre
- 13 National Bowl
- 14 Open University
- 15 Parks Trust
 - a Campbell Park
 - b Cathedral of Trees
 - c Peace Pagoda
 - d Concrete Cows
- 16 The Pitz
- 17 The Stables
- 18 Stantonbury Campus Theatre
- 19 Westbury Farm Studios
- 20 Milton Keynes Contemporary – WHITEWALL
- 21 Wolverton Secret Garden



Please visit www.milton-keynes.gov.uk/arts for an interactive map

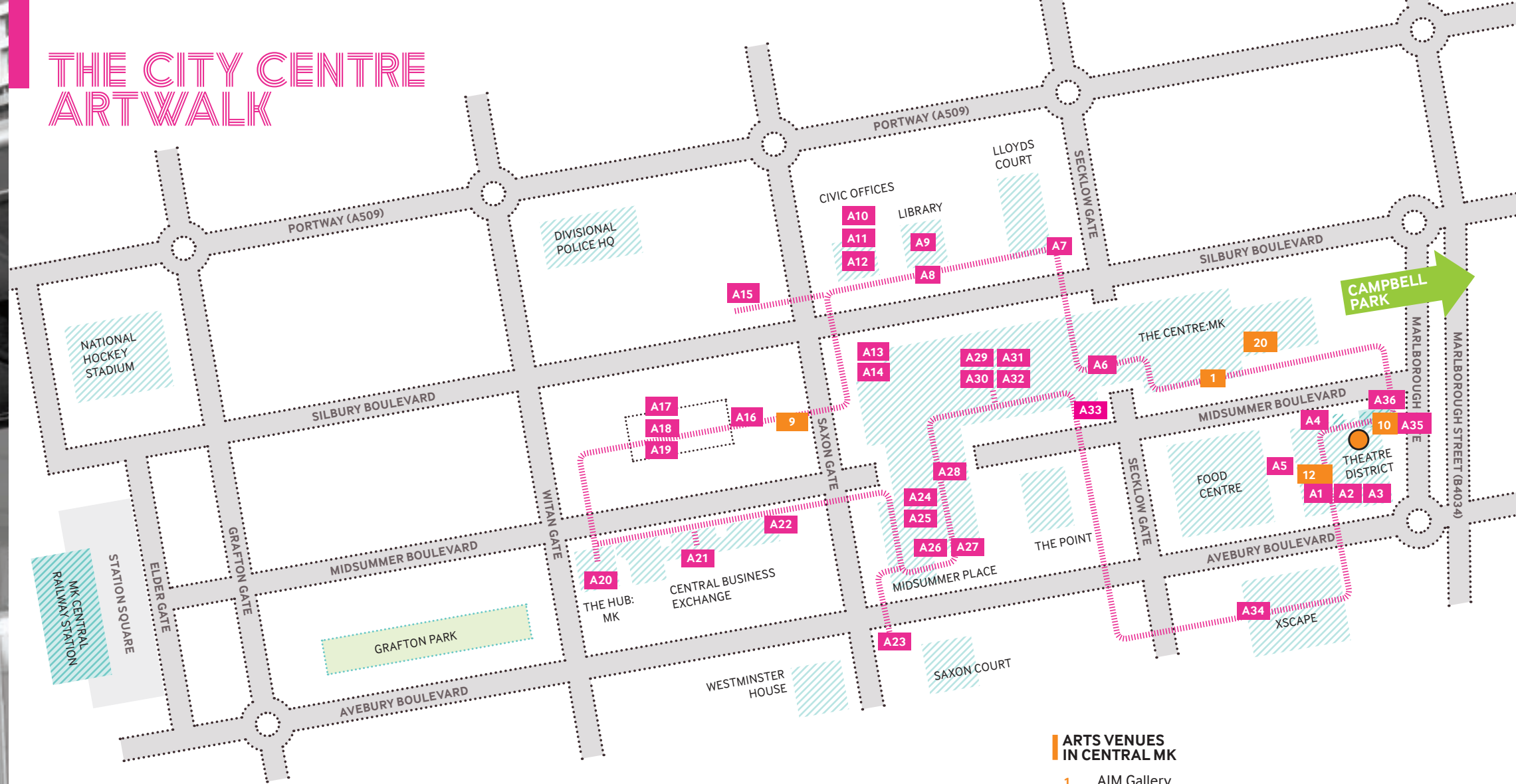


Destination
Milton Keynes

Brochure editing, photography and design by Sugarfree 020 7619 7430
Printed on 100% recycled paper



THE CITY CENTRE ARTWALK



* This mark indicates that artworks are situated inside a building. Access may be restricted by opening hours.

- A1 Moon Drawing *
- A2 Wallwork *
- A3 Electric Sheep *
- A4 Dangerous Liaisons
- A5 Paparazzi
- A6 Circle of Light *

- A7 Black Horse
- A8 The Whisper
- A9 Fiction, Non-Fiction and Reference *
- A10 City Centre 1 *
- A11 Catwalk *
- A12 Some Day *
- A13 The Conversation
- A14 The Meeting
- A15 Octo
- A16 City Church Cross

- A17 3B Series No 5
- A18 2M series No 4
- A19 3B series No 2
- A20 Lightflow
- A21 Winter Garden Panels *
- A22 The Space Between
- A23 Essence
- A24 Acorns and Leaves *
- A25 Concrete Cows *
- A26 Midsummer Place Glass *
- A27 Frog Clock *

- A28 Sitting on History *
- A29 Vox Pop (The Family) *
- A30 Flying Carpet *
- A31 Dream Flight *
- A32 High Flyer *
- A33 A Mighty Blow for Freedom: **** the Media
- A34 Xscape
- A35 The Object
- A36 Milton Keynes Gallery Exterior

ARTS VENUES IN CENTRAL MK

- 1 AIM Gallery
- 9 Milton Keynes City Church
- 10 Milton Keynes Gallery
- 12 Milton Keynes Theatre
- 20 Milton Keynes Contemporary – WHITEWALL

ART IN CAMPBELL PARK

There are a number of artworks to be discovered in Campbell Park. You can get more information about these by visiting www.milton-keynes.gov.uk/arts

ARTS GUIDE

Including a walking tour of art in Milton Keynes

Milton Keynes has established a reputation as a centre of excellence for exciting and accessible arts. This pocket-sized Arts Guide will help you seek out and enjoy the many and varied artforms available for visitors amongst the city's venues.

These include several contemporary art galleries, theatres, art centres, performance and dance spaces, community arts facilities, artist run studios and workshops. Contact details are listed on pages 2 to 11. Most venues have email bulletins or mailing lists you can sign up to for current activities and events and many are located in or close to Central Milton Keynes. There is always something new to see.

Venues like the National Bowl which are located further from the centre are shown on the pull-out map which is called **ARTS VENUES MK**. Several venues are within Central Milton Keynes itself. These are shown in orange boxes on the **THE CITY CENTRE ART WALK MAP**.

For bus routes, please visit www.mkmetro.co.uk.

The same map locates a selection of the city's public artworks. Commissioned or donated since the 1970s Milton Keynes has one of the largest public collections in the country. Artists include influential sculptors such as Dame Elisabeth Frink, Michael Sandle, Dhruva Mistry and Peter Freeman.

There is a **WALKING TOUR** set amongst the distinctive architecture, busy shopping centres, spacious precincts and tranquil green spaces of Central Milton Keynes, the route has been outlined on the map. On pages 13 to 20 you will find a reference number for each artwork shown on the map, along with a brief description.

VENUES



AIM Gallery

759 Midsummer Boulevard MK9 3BG

AIM Gallery is a shop unit in **thecentre:mk**, at the heart of the shopping area, facing Waitrose. It is a charitable organisation showcasing local and regional artists, as well as selected work by artists exhibiting nationally and internationally. They encourage community engagement and participation.

- open** 10am–4pm Tuesday, Wednesday, Friday and Saturday
2pm–8pm Thursdays 2pm–4pm Sundays
- access** Disabled access
- entry** Free
- www** aimatthegallery.co.uk
- tel** 01908 674069
- parking** Plenty of pay & display and some free areas

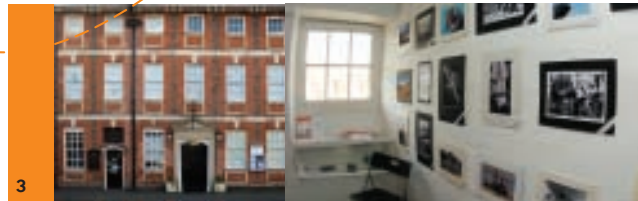


Artworks-mk

Great Linford Arts Workshop, Parklands, Great Linford, MK14 5DZ

An established visual art and craft charity based here for over 30 years with its main site set in the beautiful surroundings of Great Linford Manor Park and 2 additional sites at Galley Hill and Coffee Hall. It offers an exciting high quality artist led education programme, specialist arts and crafts workshops, exhibitions and artist's studios in an attractive setting.

- open** Exhibitions 10am–4pm Monday to Friday
10am–12 noon Saturdays
Workshop times vary please see our brochure.
- access** Some limited and assisted access
- facilities** Self-service coffee area
- entry** Free access to exhibitions, workshop fees apply to activities
- www** artworks-mk.co.uk
- tel** 01908 608108
- parking** Free on site



Cowper & Newton Museum The Three Hares Gallery

Orchard Side, Market Place, Olney, MK46 4AJ

A new community gallery space in the heart of Olney for individuals, groups and local societies; a place to hold small exhibitions of paintings, photography, sketches and visiting displays.

- open** 10.30am–4.30pm Tuesday – Saturday
(last admission 3.45pm) plus Bank Holiday Mondays and occasional Sundays as advertised
- facilities** The gallery forms part of the museum which also has a small shop
- access** Access to the gardens but no disabled access to the building
- entry** Museum entry is £4 (conc. £3)
- www** cowperandnewtonmuseum.org.uk
- tel** 01234 711516
- parking** Free parking areas within easy walking distance.
Thursdays is market day when parking is more difficult



The Chrysalis Theatre

Camphill Communities, Japonica Lane, Willen Park, Milton Keynes MK15 9JY

The Chrysalis is an auditorium that can change from an open space for dance, exhibition or conference, into a theatre with retractable raked seating and balcony for up to 209 people. The tall, spacious foyer has facilities for light refreshments.

- open** The theatre is used for private bookings and is open to audiences as specified in the programme
- access** Full disabled access
- facilities** Coffee bar
- entry** All performances in the theatre are priced accordingly
- www** chrysalismk.co.uk
- tel** 01908 235505
- parking** Free

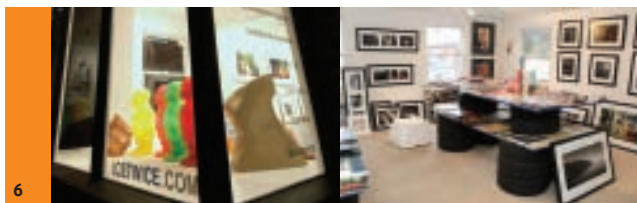
VENUES



Fringe MK

S.Annett c/o M.Hindson, Centre Manager, Midsummer Place. **MK9 3GB**
Fringe MK is an independent festival which runs a national 2D painting competition, a 2-week-long arts festival in September and curates a range of temporary exhibitions, projects and residencies throughout the year in the city centre which are listed on their website.

open Open all day every day – events throughout the year
access Full disabled access
entry Free
www fringemk.com
tel 07918 030445



ICETWICE Gallery & BookStore

25 High Street South, Olney, Buckinghamshire **MK46 4AA**

An intriguing, innovative contemporary commercial art gallery in the Milton Keynes/Bedford/Northampton triangle. ICETWICE has a wide selection of photography, prints, painting and sculpture suited to contemporary lifestyles.

open **10am–5pm** Tuesday to Saturday
11am–4pm Sunday
Closed Mondays
access Assisted access to ground floor, no access to upper floors
entry Free
www icetwice.com
tel 01234 714499
parking 8 Free parking spaces behind gallery



Inter-Action MK

The Old Rectory, Waterside, Peartree Bridge, Milton Keynes **MK6 3EJ**

Inter-Action MK creates imaginative collaborations between artists and communities and is based at The Old Rectory, a beautiful three acre Grade II listed site next to the Grand Union Canal. Inter-Action MK runs a programme of art workshops and events at the Old Rectory. A wonderful place to be creative and learn new skills.

open Site accessible **9am–10pm** daily including weekends & bank holidays. Office hours vary.
access Full disabled access
entry Free to access the site. Activity prices vary
www interactionmk.org.uk
tel 01908 678514

parking Free parking on site



Madcap Performing Arts Centre

Madcap Trust Limited, Creed Street, Wolverton, Milton Keynes **MK12 5LY**

A theatre with proscenium arch stage and seating for up to 200. Also offering a music studio with full rehearsing and recording facilities; dance studio with mirrored walls; and a small performance space in the concourse and gallery. There is an intimate bar with raised stage and informal seating.

open **10am–3pm** Monday to Friday
Open late for exhibitions and events. See website for details.
access Full disabled access
facilities Theatre, gallery, bar, music studio, dance studio
entry Free with some events and performances priced accordingly
www madcap.org.uk
tel 01908 320179
parking Free parking adjacent to the building

VENUES



Milton Keynes City Church

300 Saxon Gate West, Milton Keynes MK9 2ES

The City Church has wonderful acoustics and is a beautiful setting to hear live music. Concerts feature professional and local musicians and offer programmes spanning from Byrd to Britten, Purcell to Porter – there is something for everyone.

- open** 8am–8pm Monday to Friday
9am–7pm Saturdays and for services on Sunday
The church is open additional hours for performances
- access** Full disabled access
- facilities** Coffee shop, gift shop, meeting rooms
- entry** Free to visit the venue but performances are priced accordingly
- www** cornerstonemusicmk.co.uk
- tel** 01908 246486
- parking** Free parking after 6pm (pay & display before)



© Milton Keynes Gallery

Milton Keynes Gallery

900 Midsummer Boulevard, Central Milton Keynes MK9 3QA

The gallery has a changing programme of international contemporary art exhibitions and occasional off site artist's projects. A stimulating programme of public talks, tours, artist-led workshops, education programme and family days cater for all ages.

- open** 10am–5pm Tuesday to Saturday / 11am–5pm Sunday
open to 8pm Thurs Closed Mon and exhibition changeovers
- access** Full disabled access with some disabled parking outside
- facilities** Foyer book shop
- entry** Free admission to gallery (most related events are free too)
- www** mk-g.org
- tel** 01908 676 900 (Information Desk)
- parking** Short distance from pay and display/multi-storey car park



MK Arts for Health

Facilities Directorate, MK Hospital, Standing Way, Eaglestone Milton Keynes, MK6 5LD

MK Arts for Health manage artists' training residencies, deliver training to health care staff and place music and performance within the hospital. They also oversee the hospital art collection comprising over 500 works, and display work by local artists and community groups in temporary exhibition spaces around the hospital site.

- open** The hospital is open 24hrs with artwork across the site
- access** Full disabled access
- facilities** Friends Café and Eaglestone Restaurant
- entry** Free
- www** mkartsforhealth.org.uk
- tel** 01908 243284
- parking** Hospital car parking. Charges apply



Milton Keynes Theatre

Marlborough Gate, Central Milton Keynes MK9 3NZ

The theatre offers a wide and varied programme of first class dance, drama, musicals, opera, comedy and children's shows for the region.

- open** **Telephone sales**
9am–10pm Monday to Saturday 10am–8pm Sunday
- access** The theatre has a step free ground floor level, and lift access to all floors. There are twelve dedicated seats in the stalls and a box on the circle accessible for wheelchair users
- facilities** Meeting rooms, bars, confectionary stands and performance space for educational programmes
- entry** Individually priced performances. See website
- www** miltonkeynestheatre.com
- tel** **Box Office** 0870 060 6652 (booking fee)
Stage Door 01908 547500
- parking** Short distance from pay and display/multi-storey car park

VENUES



13

National Bowl

Watling Street, Milton Keynes MK5 8AA

A 65,000 capacity venue offering a stage and grass plateau. Performers such as Take That, Oasis, Eminem and Linkin Park have all held sell-out gigs at this Internationally renowned site.

www thenationalbowl.net

tel 01793 721 333



14

Open University

Walton Hall, Milton Keynes MK7 6AA

The Open University has a range of permanent and temporary artworks across its site and runs a Sculpture Walk from June to September. Information will be available on their website.

www open.ac.uk

tel 01908 655457



16

The Pitz Club

c/o The Woughton Centre, Rainbow Drive, Leadenhall MK6 5EJ

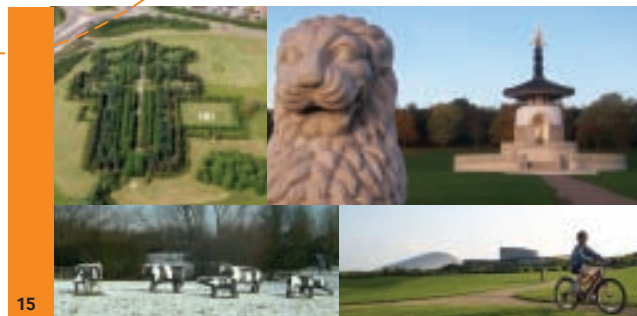
Milton Keynes' award winning and premier live music venue, 400 capacity, 14+ admitted. Mainly rock venue concentrating on all types of guitar music from folk to death metal!

open Centre & box office open from 9am until 9pm

access Full disabled access

www mspace.com/thepitzclub

tel 01908 660392



15

Parks Trust

Campbell Park Pavillion, 1300 Silbury Boulevard, Campbell Park MK9 4AD

The events plateau at Campbell Park offers a range of events and festivals throughout the year, most of which are free of charge. The Parks Trust also manage the Cathedral of Trees, Peace Pagoda and Concrete Cows.

open Open all day every day – events throughout the year

access Full disabled access

entry Free to access site. Some events free - check websites

www theparkstrust.com

tel 01908 233600

parking Parking approx 5 minutes walk away. Various charges.



17

The Stables

Stockwell Lane, Wavendon, Milton Keynes MK17 8LU

A live music venue putting on over 300 concerts and a similar number of educational activities every year. The concert programme crosses genres – folk, world, rock, pop, classical, country, jazz – whatever you like, you'll find it at The Stables!

open **Core Box Office hours: 10am–6pm** Monday to Saturday
5pm–8pm (Sunday and show nights only)

access Full disabled access

facilities Café in Stage 2, open from 5.30pm on show nights.

entry Individually priced performances. See website

www stables.org

tel **Box Office:** 01908 280800

parking Parking for 250 cars is available immediately outside the venue and is completely free of charge.

VENUES



18

Stantonbury Campus Theatre

Stantonbury Campus, Stantonbury, Milton Keynes MK14 6BN

An intimate 250 seat theatre (comedy, contemporary drama and family-friendly children's theatre) and gallery. The theatre is available for hire and supports local productions including musical theatre, big bands, choirs and dance.

- open** 10am–2.15pm Monday to Friday (and 45 minutes before the start of a show) **Gallery:** Open during shows and by appointment through karen.vizard@stantonbury.org.uk
- access** Full disabled access
- facilities** Bar
- entry** Individually priced performances. Free entry to site
- www** stantonbury.org.uk
- tel** 01908 324422
- parking** Free parking adjacent to venue



19

Westbury Farm Studios

Foxcovert Road, Shenley Wood, Milton Keynes MK5 6AA

Westbury maintains affordable studios, work spaces and supports professional artists while raising the profile of the arts in Milton Keynes. There are high quality original works of art for sale as well as an art rental scheme.

- open** Open for specific events and exhibitions. Please contact to arrange a studio visit.
- access** Ground floor has no steps but no disabled access to upper floors. No disabled toilet.
- facilities** Artists studios
- entry** Free
- www** westburyfarmstudios.co.uk
- tel** 01908 501214
- parking** Free on site



20

Milton Keynes Contemporary – WHITEWALL

Midsummer Arcade, Adjacent John Lewis, thecentre:mk
Central Milton Keynes MK9 3BA

A professional arts space sited in the heart of a busy shopping centre bringing contemporary fine art to a wide audience. WHITEWALL presents 7/8 week exhibitions per year. The project showcases regional and national artists' work, whilst offering development funding and catalogue publishing for each exhibition. See website for more detail.

- open** 9am–8pm Monday to Friday
9am–7pm Saturday and 11am–5pm Sunday
- access** Full disabled access
- facilities** All facilities that are available at thecentre:mk
- entry** Free
- www** miltonkeynescontemporary.co.uk
- tel** 07866 804354
- parking** Shopping centre car parks



21

Wolverton Secret Garden

Old Stratford Park, Wolverton MK13 0DY

A community garden with mosaics and sculpture including work by artist Bill Billings. There are free Sunday concerts three times a year during the summer months; bring seating and a picnic and listen to a variety of musical genres.

- open** Open all day every day
- access** Full disabled access
- entry** All activities and access free of charge
- www** wolvertonsecretgarden.co.uk
- tel** 01908 313514
- parking** There is no direct parking but free parking is available in and around Wolverton which is within a short walking distance

ARTWALKS

MILTON KEYNES ARTWALKS provides you with a walking map and guide around some of the many public artworks in Central Milton Keynes. As you will see from the map, the Artwalks is a circular route, which you can start at any point.

The information in this guide starts and ends at Milton Keynes Theatre.



1 HOUR 30 MINUTES

This walk will take approximately one and a half hours and is suitable for wheelchair users and pushchairs.

Guided tours or Artwalks can be arranged for groups by the Blue Badge Guides. Please telephone **01908 641294**, e-mail bluebadgeguides@fsmail.net or visit www.mkweb.co.uk.

Background

Milton Keynes has a large collection of public sculpture, much of which was purchased or commissioned when the new city was being built in the 1970s and 1980s. On your walk through the city centre you can see work by some of the most influential sculptors of the past thirty years, including Dame Elisabeth Frink, Michael Sandle, Bill Woodrow, Dhruva Mistry and Peter Freeman. This walk does not include all the public art works in Milton Keynes and the collection changes.

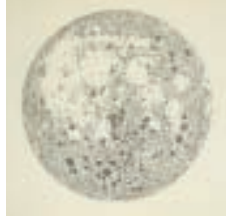
Milton Keynes Council are actively commissioning artists to respond to and contribute creatively to Milton Keynes. For further information about the city collection please visit www.milton-keynes.gov.uk/arts

Moon Drawing, 1999. *Alison Turnbull* Graphite and ink on concrete

Turnbull's wall drawing – seen from the Milton Keynes Theatre Foyer – is taken from a topographical map of the moon's surface made in Leipzig in 1894. From outside the building the drawing is almost invisible during daylight, but, like the moon itself, becomes visible when lit at night. Limited Edition prints of *Moon* are available for purchase from MK Gallery.

© Milton Keynes Gallery

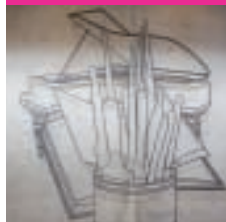
map ref: A1



Wallwork, 1999. *Michael Craig-Martin* Laser-cut mild steel

Michael Craig-Martin's work – also in the Milton Keynes Theatre Foyer – is a visual clue to the function of the building. His 'drawing' in mild steel shows three objects – a grand piano, a book and a tin of paint brushes. Together they represent processes underlying the creative activities here: music, the written word, and the visual image

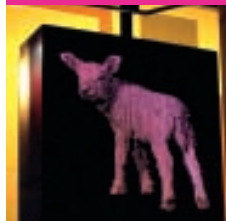
map ref: A2



Electric Sheep, 2003. *Bruce Williams* Laser cut images into Steel and Glass Lightbox

The artist was influenced by Margaret Powell's life as a sheep farmer. The Margaret Powell fund contributed to the cost of building the Theatre and Gallery in 1999. The square outside the Theatre is called Margaret Powell Square, and the changing lights and colour of the artwork can be seen from this space.

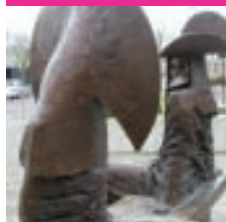
map ref: A3



Dangerous Liaisons, 1995. *Philip Jackson* Bronze

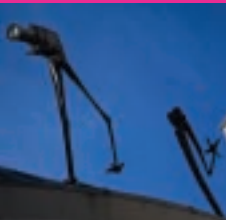
Dangerous Liaisons is based on the mask and inspired by the Maschera Nobile of 17th and 18th century Venice. This costume hides the identity and gender of its wearer, allowing him or her to go about the city unrecognized. This would allow for intrigues, vendettas and love affairs to take place without fear of discovery.

map ref: A4



ARTWALKS

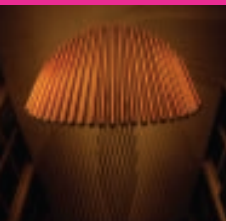
map ref: A5



Paparazzi, 1996. *Steven Gregory*
Bronze

Gregory's anthropomorphic cameras stalk the Theatre district like vultures or crows. Gregory describes them as 'hunting in a pack, but always looking after number one first. Ready to snap at just the right moment to immortalise their chosen victim'.

map ref: A6



Circle of Light, 1980. *Liliane Lijn*
Aluminium and copper wire (Currently being restored – to be re-installed during 2009)

Circle of Light consists of 23 tubes creating a curved, circular plane that relate to the shape of the sun, moon and human eye. The cylindrical tubes relate to the shapes behind the retina of the eye that convert light into electrical pulses.

© Liliane Lijn

map ref: A7



Black Horse, 1978. *Elisabeth Frink*
Bronze

Black Horse is sited outside Lloyds Bank, echoing its iconic logo. Elisabeth Frink gained recognition in the early 1950s. She used animal and human forms to express the anguish of the post-war period

map ref: A8



The Whisper, 1984. *Andre Wallace*
Bronze

The Whisper is ideally suited to be outside the public library, a space where people meet and socialise. Wallace's distinctive heavy figures, larger than life-size, sit relaxed and at ease, watching the world go by.

Fiction, Non-Fiction and Reference, 1988. *Boyd and Evans*

Acrylic on canvas

This large-scale painting hung across from the staircase in the Library, draws its reference from hundreds of documentary photographs of Milton Keynes and shows local estates and local people. Its title refers both to the book sections of a public library, and to the content of the work, which mixes fictional and real events.

Catwalk, 1977 **City Centre 1**, 1977
Stephen Gregory

Acrylic on canvas

Stephen Gregory was artist in residence in Milton Keynes between 1977-79. These paintings hang in the public stairwell of the Council's Civic offices, they examine the building of the new town and celebrate its contemporary architecture.

Some Day, 1984. *Boyd and Evans*

Acrylic on canvas

In 1982 Fionnuala Boyd and Les Evans were invited to Milton Keynes as artists in residence; they have lived and worked in the city ever since. *Some Day*, which hangs in the third floor foyer of the Council Civic offices, shows scenes from life in the 'new-town' of Milton Keynes.

The Conversation, 1995.

Nicolas Moreton

Kilkenny black fossil limestone and bronze

The Conversation consists of two figures in conversation, raised from the ground on a plinth, away from the bustle of the people below. The plinth is their table, an intimate and private space elevated above the rest of the world.

map ref: A9



map ref: A10
A11



map ref: A12



map ref: A13



ARTWALKS

map ref: A14



The Meeting, 1995. *Nicolas Moreton*
Birds eye Derbyshire fossil limestone and bronze

The outer panels Dawn and Reflection shows a man and woman separately contemplating the day's events. The Cup (middle panel) is described by the artist as showing 'a man and woman sharing thoughts and wishes, symbolised by the sharing of a drink from the same cup.'

map ref: A15



Octo, 1980. *Wendy Taylor*
Stainless steel, water

Octo's twisting ribbon of stainless steel makes a figure of eight. The sculpture is based on a Möbius strip, a mathematical term describing a continuous surface created by twisting a long rectangular strip through 180° and joining the ends. The form does not have an inside or an outside.

map ref: A16



City Church Cross, 1991. *Alan Evans*
Steel

This simple cross can be viewed from 360° and consists of 8 blades wrapped together with steel. The artist reflects the ecumenical nature of the church – 'the coming together of different denominations, the binding together of the elements whilst still retaining their individual identity.'

map ref: A17
A18
A19



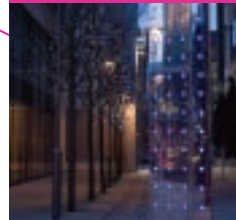
3B Series No 5, 1966-68
2M series No 4, 1960s
3B series No 2, 1968-69
Bernard Schottlander
Painted steel

These large brightly coloured abstract sculptures are based on simple geometric forms. The titles relate to the artist's initials (BMS) and he enjoyed the fact that MS could also be seen as an abbreviation of mild steel.

Lightflow, 2007. *Peter Freeman*
Digital LEDs and mirror stainless steel

The two 4m vertical towers, located at opposite corners of the Hub's square, use colour and movement inspired by the reflections of light on water. The towers are interactive, allowing anybody to choose a different light effects using one of six text commands:-Sparkle, Rainbow, Splash, Blue, Flow, Ripple.

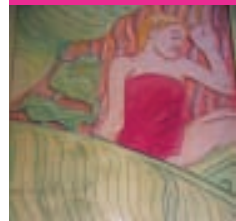
map ref: A20



Winter Garden Panels, 1988. *Jeremy Turner, Mark Adams and Christine Tacq*
Sycamore and watercolour

This carved wooden artwork clads a 8 x 4 ft column within the Winter Gardens. Each of the four faces of the column is based on a theme relating to places within the Winter Garden – the garden, the health club, the restaurant and a milk bar, which was never built.

map ref: A21



The Space Between, 1992.
Ellis O'Connell

Patinated bronze with fibre optic elements

Based on ancient Celtic boundary markers and the Ogham stones of pre Christian Ireland. The artist describes the relationship between the space and her sculpture: 'Exchange Square is a perfectly proportioned square composed of right angles and straight lines. To contrast with this rectilinearity, the sculpture is made up of curved forms.'

map ref: A22



Essence, 1982. *Wendy Taylor*
Bronze

The artist describes her work as being 'surrounded by a wide selection of shrubs which give a secret air to the area, providing a complete contrast to the bold outlines of Milton Keynes' avenues. The soft enfolding lines of the sculpture are a response to the intimacy of the enclosed environment.'

map ref: A23



map ref: A24



Acorns and Leaves, 2000. *Tim Ward*
Stainless steel

Tim Ward's sculpture of acorns relate to the location under the old oak tree in the middle of the Midsummer Place shopping centre, now also occupied by the Concrete Cows.

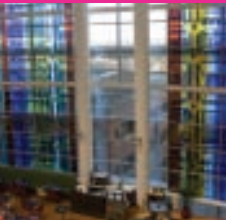
map ref: A25



Concrete Cows, 1978. *Liz Leyh*
Concrete and paint

The original concrete cows made in 1978 by US artist Liz Leyh with the help of local schoolchildren. The cows have been relocated around the city including the Hockey Stadium in 2007 where they became a mascot of MK Dons. They are currently located by the oak tree in Midsummer Place, whilst a set of replica cows is at Bancroft.

map ref: A26



Midsummer Place Glass, 2000. *Anne Smyth*
Coloured, carved and etched glass

Designed around Milton Keynes' geometric grid system, using the architect's original road models for reference. Woven into the grid are images of historical and current activity such as the geometric patterns from the Roman Mosaic found at Bancroft. Enigma from Bletchley Park, train wheels from Wolverton and the Grand Union Canal.

map ref: A27



Frog Clock, 2000. *Kit Williams*
Mixed materials, mechanical

The clock is opposite the Midsummer Place Glass by Anne Smyth. It performs on the hour, and is very popular with families, as the performance includes music and culminates in the frog blowing bubbles onto the crowd below. The clock weighs 4 tonnes, and is believed to be one of Britain's biggest animated feature clocks.

Sitting on History, 1996. *Bill Woodrow*
Bronze

The ball and chain refers to the book as 'captor of information' from which we cannot escape. Woodrow proposes that although we absorb knowledge from history, it doesn't necessarily change our behaviour.

map ref: A28



Vox Pop (The Family), 1988. *John Clinch*
Bronze (in storage for 2009 – to be relocated back in Queens Court upon completion of development)

A shortened form of 'vox populi' a Latin phrase meaning the voice of the people. Clinch's work celebrates ordinary members of the public rather than the rich and famous. The sculpture was originally intended to show the diversity of people needed to make Milton Keynes a great city.

map ref: A29



Flying Carpet, 1989. **Dream Flight**, 1989. **High Flyer**, 1989. *Philomena Davis*
Bronze (All to be relocated from Queens Court, to the Planters in Silbury Arcade during 2009)

This series of sculptures focus on the theme of flight. The artists describes: 'they depict man's fantasy with flight and escapism, in particular, the sorts of escapist dreams that come to us in childhood and adolescence.'

map ref: A30
A31
A32



A Mighty Blow for Freedom: ** the Media**, 1988. *Michael Sandle*
Bronze

Michael Sandle's work is a critique of the media, taking the logo of a well-known film company as its starting point. The strong-armed man hitting a gong in the logo is replaced by a helmeted androgynous figure swinging an axe to smash a television.

map ref: A33



map ref: A34



Xscape, 2000. *Diane Maclean*

Polished stainless steel

Maclean says: 'The sculpture is a meeting place, a resting place, an amusement – people see their distorted reflections in it (fat or thin) – and the surroundings are reflected like abstract paintings, always changing according to where the viewer is'.



map ref: A35



The Object, 1995-7. *Dhruva Mistry*

Stainless steel

Dhruva Mistry has created a curious architectural structure. Although there seems to be an entrance, physical entry is impossible, and as you move around the sculpture, perspectives seem to distort



map ref: A36



Milton Keynes Gallery Exterior. *Various*

Milton Keynes Gallery occasionally commissions artists to transform the exterior of its building into an artwork. In recent years this has included Michael Craig-Martin, Richard Woods (left) and Gilberto Zorio

From time to time artworks may be unavailable to the public due to maintenance, artwork loans, relocation and building development.